

# Top marks for Gordon Way

9/31  
SIR,— May I be the first to congratulate Gordon District Council, landowners and, in particular, the local management and staff of the oft-maligned Forestry Commission for their work in preparing the route for the first part of the proposed "Gordon Way", which is due to be opened officially this month.

I have wandered among our hills and forests for more than 50 years. Consequently, the embryo route from Suie to the Brindy Hill runs through an area with which I am familiar.

Having observed the hypocrisy of hillwalking and rambling organisations, I cannot say that I hope such bodies will use the Gordon Way. Solitude for the masses is not a viable concept. The dignity of the Pict stones is always preferable to the depravity of pub-stops.

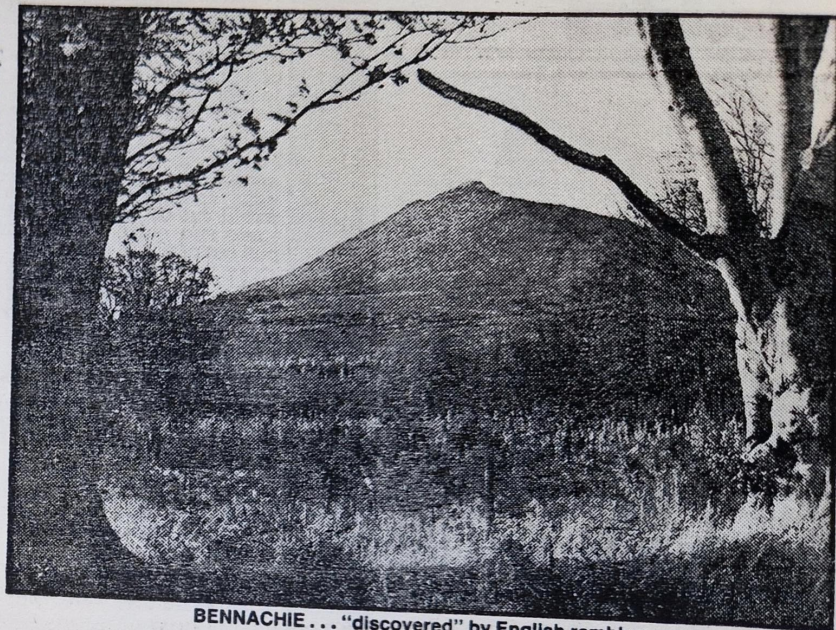
I have noted that the Baillies of Bennachie are

enthusiastic about the route. I wonder if they are aware that Bennachie is in dire peril. Reading through one of the many outdoor magazines lately, I came across a feature by a contributor who told us all the things about Bennachie we know already.

Is it not truly remarkable the amount of Englishmen who "discover" our mountains and are simply dying to tell us all about them — from Bennachie to Ben Hope — with not a word of Doric, let alone Gaelic, between them?

The threat to Bennachie lies in the fact that the writer of the feature, having "discovered Bennachie", concludes his piece by wishing it was possible to dig it up and transplant it to the Wirral so he could see it every morning from his living-room. Who knows what modern technology could lead to?

R. E. Repper, 182 Hilton Avenue, Aberdeen.



BENNACHIE . . . "discovered" by English ramblers